

Leader of pneumatic components.

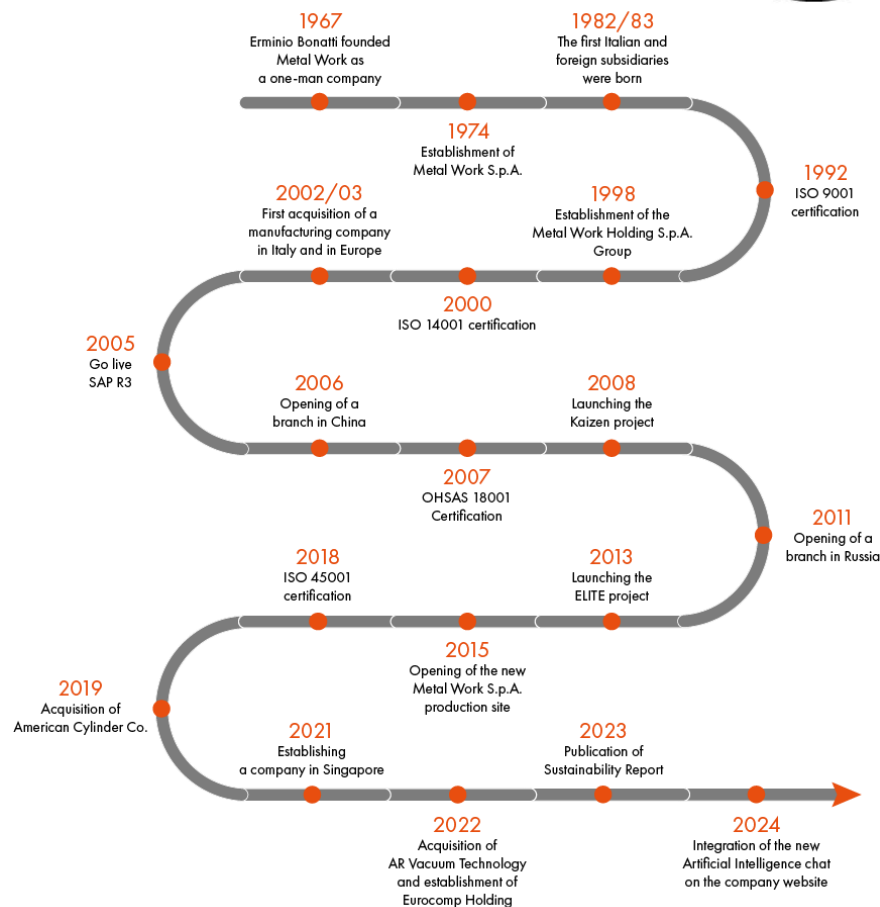
A global company.



Metal Work is a global company that is close to its customers anywhere, anytime.

Just like energy from the sun or the Earth that turns on its axis, the great forces of nature cannot always be seen but they are everywhere. In the same way, Metal Work operates in Italy and worldwide providing experience and quality in every component.

Looking to the sky.



The Metal Work adventure starts in 1967 with the production of rapid connections for compressed air systems. It is the story of a company that, from nothing, has been capable of building something big, reaching results at world level. With more than 600 workers in their Concesio (BS) factory and more than 900 people making up the Italian and overseas sales organisation, today we are among world leaders in the automatic air system sector.

"We work together for a purpose. There's nothing that can't be done better today than yesterday."

Erminio Bonatti
Erminio Bonatti

Leader numbers.



61

filiali
subsidiaries



850+

prototipi testati ogni
anno
*prototypes tested every
year*



1.380

prodotti speciali
creati ogni anno
*special products
manufactured every
year*



44.000 m²

di superficie
of floor space



500+

utenti SAP
SAP user



70

specialisti dedicati
dedicated specialists



320

persone a contatto diretto
con il mercato ogni giorno
*people in direct contact
with the market every day*



300

utenti CRM
CRM user

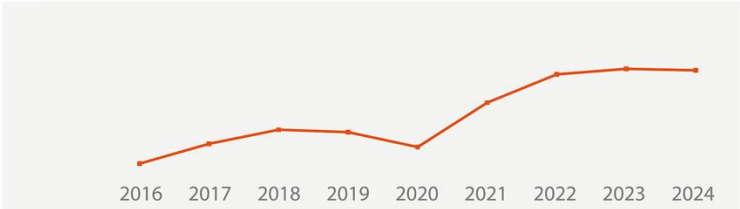


11.000

ore di formazione
hours of training

Leader numbers.

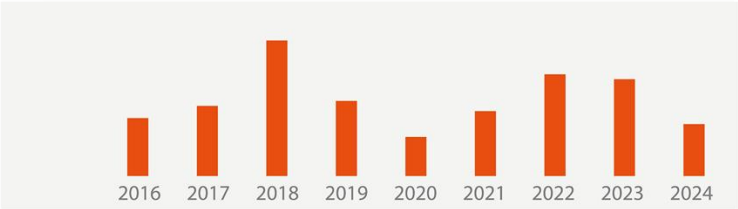
SALES



VENDITE	SALES	161.490	180.062	193.244	190.966	177.007	218.564	245.065	250.206	248.829
---------	-------	---------	---------	---------	---------	---------	---------	---------	---------	---------

* Data shown in thousands of Euro

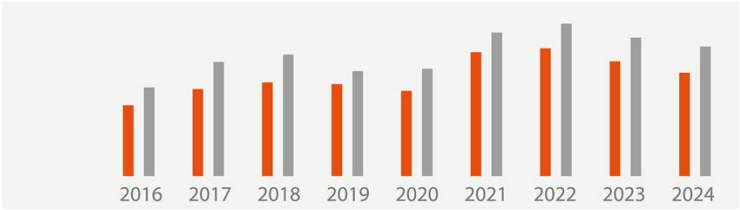
CAPEX



INVESTIMENTI	CAPEX	10.813	13.094	25.332	14.024	7.283	12.119	19.017	18.086	9.679
--------------	-------	--------	--------	--------	--------	-------	--------	--------	--------	-------

* Data shown in thousands of Euro

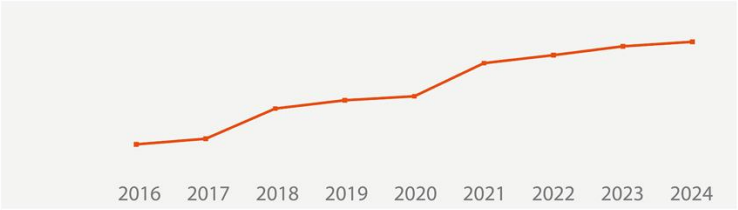
NET CASH FLOW - EBITDA



NET CASH FLOW	17.617	21.662	23.347	22.909	21.227	30.880	31.821	31.821	25.726
EBITDA	22.074	28.445	30.286	26.132	26.735	35.782	38.010	34.509	32.297

* Data shown in thousands of Euro

EMPLOYEES



PERSONALE	EMPLOYEES	1.017	1.038	1.151	1.182	1.197	1.321	1.351	1.384	1.401
-----------	-----------	-------	-------	-------	-------	-------	-------	-------	-------	-------

We do things in style

04

We do things in style.



Some of our subsidiaries

Our products can be found in Italy and abroad thanks to 61 subsidiaries offering an efficient and capillary pre- and post-sales service.

Product quality and a dynamic sales organisation are the basis on which Metal Work founds its leadership, allowing the group to satisfy all possible requests regarding automation systems.

The Metal World.

Our subsidiaries in the world

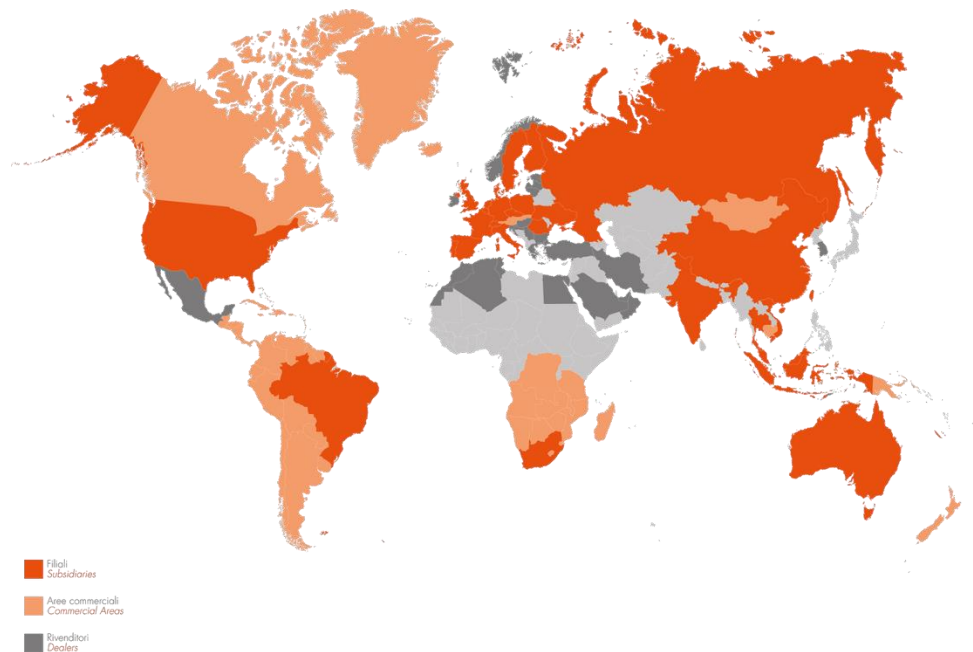


Australia	France	Portugal	Switzerland
Belgium	Germany	Romania	Thailand
Brazil	Holland	Russia	Uk
China	India	Singapore	Ukraine
Czech Republic	Indonesia	South Africa	Usa
Denmark	Malaysia	Spain	Vietnam
Finland	Poland	Sweden	

Our subsidiaries in Italy



Bari	Lecco	Novara	Treviso
Bergamo	- Varese	Parma	Verona
Bologna	Mantova	Prato	Vicenza
Brescia	Modena	Rimini	
Cremona	Monza Brianza	Torino	



The Metal World.



Handling - since **2001** - Italy



Hydraulic-pneumatic - since **2005** - Italy



Automation machines and systems - since **2011** - Italy



NPT actuators - since **2019** - USA



Vacuum - since **2022** - Spain

The mission.



To be a leader, first of all you must be aware of the responsibilities deriving from your work.

At Metal Work we call this awareness Lean Thinking that aims to attack the waste throughout the value chain and through the continued involvement of people, increase flexibility and competitiveness.

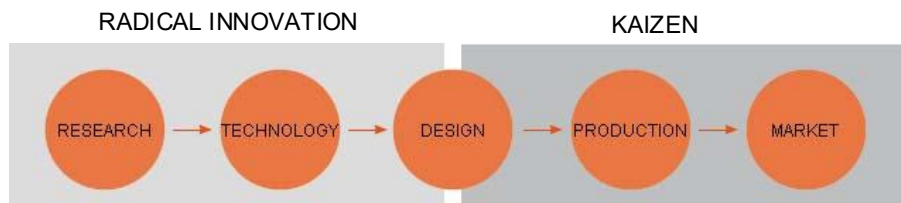
Kaizen philosophy.

RESULTS

- Improvement in one's own work
- Savings in energy, material, and other resources
- Improvement in the working environment
- Improvements in machines and processes
- Improvements in office work
- Improvements in product quality
- Ideas for new products
- Customer services and customers relations
- Reduction of waste in all company activities

Our method is based on the introduction in our company of the continuous improvement culture originating from the Japanese KAIZEN management philosophy.

Kaizen is based on the fundamental principle of this 'philosophy': "Energy comes from below", or more precisely on the understanding that a company's results are not due exclusively to decisions at management level, but also from the work carried out directly on products and processes. Management therefore assumes a new role, not so much linked with hierarchy as with the guidance and support of those directly involved in production and other operations that contribute to the company's activities.



Technology and environment.



Long ago we identified an important factor of development in the low environmental impact of our products.

This allows us to achieve winning results by respecting the environment of every country in which we operate. ISO14001 certification for Environmental Management Systems is the proof of how, from 2000 onwards, our company has been a leader in the research and development of technologies that respect the environment.

The certifications.



Recognition of the quality of our work and the certification of our management systems are, first of all and for all of us, a moral undertaking

For this reason, since 1992, Metal Work has been certified according to the ISO 9001 standard, added to which the ISO 14001 Environmental Management in 2000.

In 2007 Metal Work followed up with the OHSAS 18001 standard, guaranteeing a Workers' Health and Safety Management System to match the company's level. In 2018 Metal Work moved from OHSAS 18001 to ISO 45001.

All our certificates have been issued by the German Certifying Body DEKRA ITS, accredited by DAkkS.



ISO 9001



ISO 14001

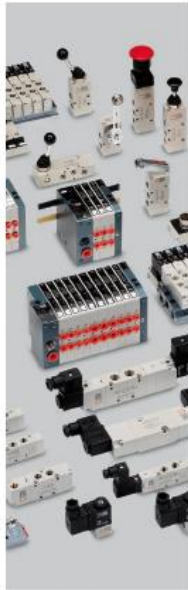


ISO 45001

The products.



ACTUATORS



DISTRIBUTORS



UNITS

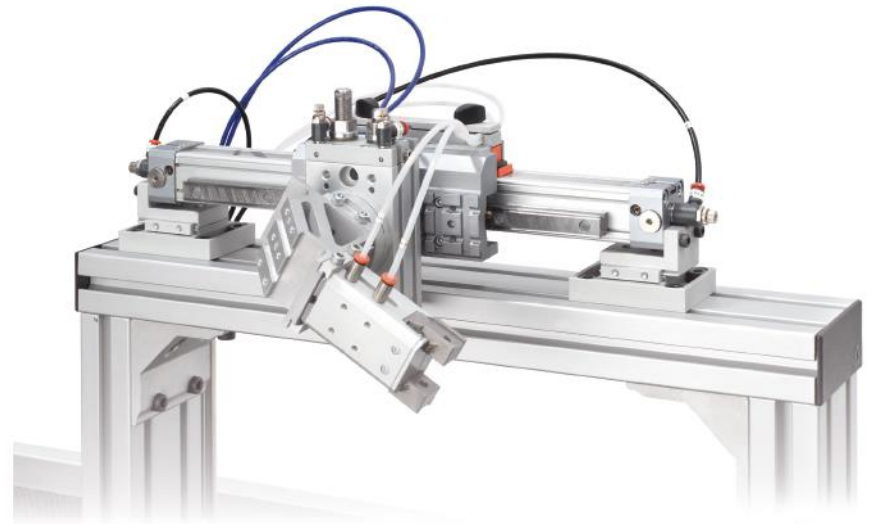


FITTINGS



ACCESSORIES

Quality above all: from design to production, we follow every single piece to ensure perfect movement.



The factory.



40,000 m² of precision and quality in our production plant:
this is where the movement starts.



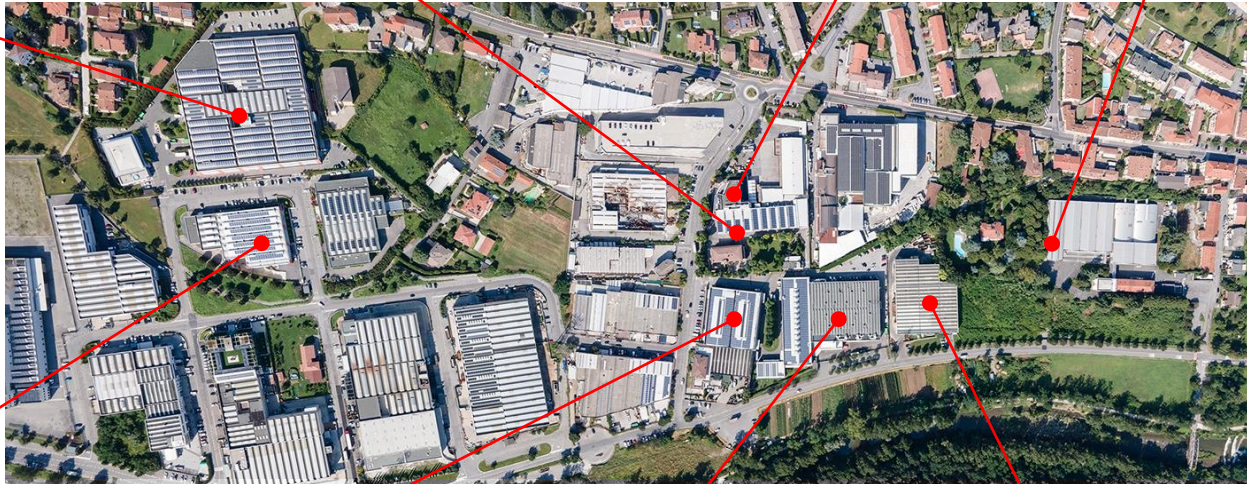
The factory.

Logistics area
2016

Original starting nucleus
1967-1974

Management
offices
2001

New acquisition area
2020



Production area
Tecnopolimeri
2021

Production area
1980

Production area
1990

New acquisition area
2023

Training future.



We dedicate 11,000 hours a year to training our staff, in the conviction that this is the true competitive advantage of the future.

In a mature and global market that is saturated, where all competitors are able to propose complete offers that look more and more alike, the only true added value consists of human assets and relative skills at all levels.

The Metal Work Gallery.



Thanks for your attention