

ROUND CYLINDER SERIES SHORT RNDC

Short clean profile cylinders with hinge built into the rear head.

Available in different versions:

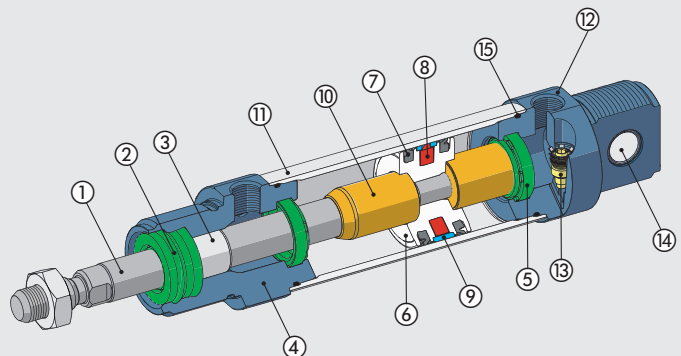
- configuration with or without magnet
- single- and double-acting - single or through-rod
- with pneumatic cushioning or sound-proof version
- range of gaskets available in NBR, POLYURETHANE, FKM/FPM (for high temperatures) and low-temperature gaskets.



TECHNICAL DATA		POLYURETHANE	NBR	FKM/FPM	LOW TEMPERATURE
Max operating pressure	bar	10	10	10	10
	MPa	1	1	1	1
	psi	145	145	145	145
Temperature range	°C	-25 to +80	-10 to +80	-10 to +150 (non-magnetic cylinders)	-35 to +80
Fluid		Unlubricated air. Lubrication, if used, must be continuous			
Bores	mm	32; 40; 50; 63			
Design		Screwed heads			
Versions		Double-acting, Double-acting through-rod, Double-acting cushioned, Double-acting through-rod cushioned, Single-acting retracted, No stick-slip			
Magnet for sensors		All versions are available either with or without magnet			
Standard strokes †	mm	Single-acting from 1 to 250			
	mm	Double-acting from 1 to 500			
Inrush pressure	bar	Ø 32 and 40: 0.4 - Ø 50 and 63: 0.3			
Forces generated at 6 bar thrust/retraction		See cylinder "General technical data" at the beginning of the chapter			
Notes		For speeds lower than 0.2 m/s to prevent surging, use the version No stick-slip and non-lubricated air † Maximum recommended strokes. Higher values can create operating problems.			

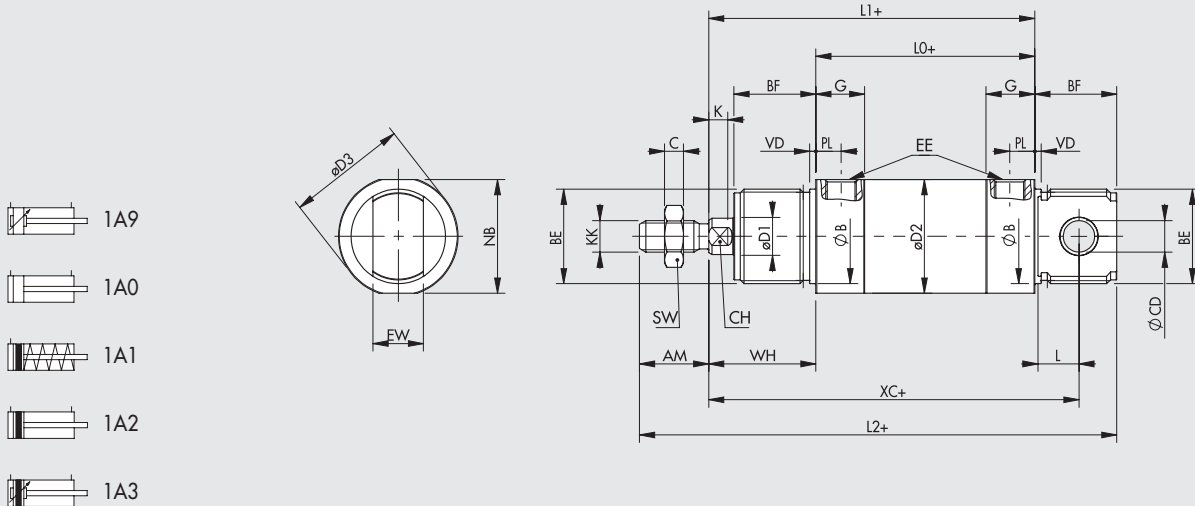
COMPONENTS

- PISTON ROD: C45 steel or stainless steel, thick chromed
- PISTON ROD GASKET: polyurethane, NBR or FKM/FPM
- GUIDE BUSHING: steel strip with bronze and PTFE insert
- FRONT CYLINDER HEAD: anodized aluminium alloy
- CUSHIONING GASKET: polyurethane, NBR or FKM/FPM
- PISTON: aluminium alloy
- PISTON GASKET: polyurethane, NBR or FKM/FPM
- MAGNET: plastoferrite
- GUIDE RING: technopolymer
- CUSHIONING CONE: brass
- BARREL: anodized aluminium alloy
- REAR CYLINDER HEAD: anodized aluminium alloy
- CUSHIONING NEEDLE: brass, with needle out movement safety system even when fully open
- REAR BUSHING: steel strip with bronze and PTFE insert
- Static O-rings: NBR or FKM/FPM



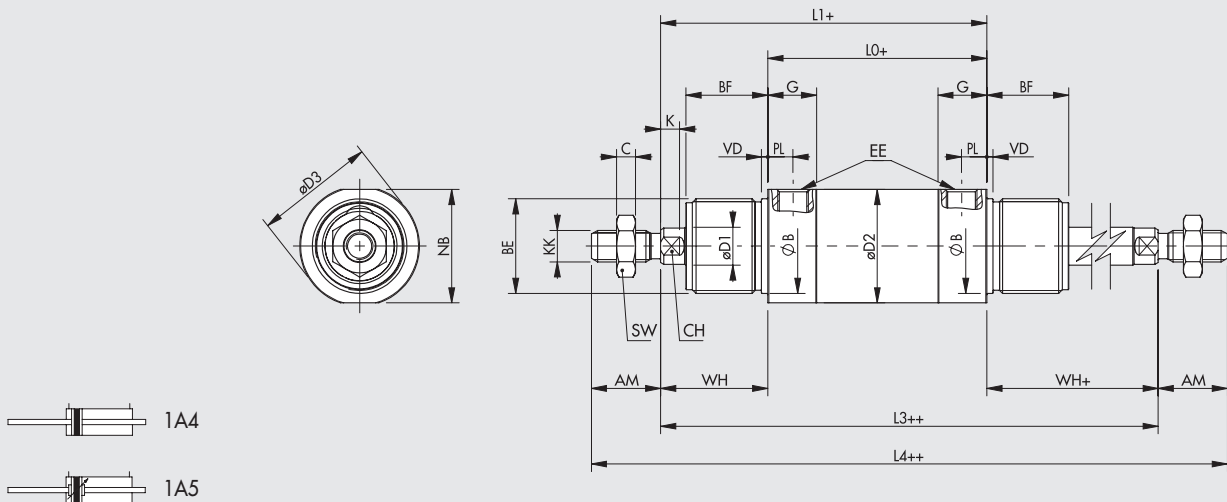
DIMENSIONS

STANDARD VERSION



+ = ADD THE STROKE
 ++ = ADD TWICE THE STROKE

THROUGH-ROD VERSION



Ø	AM	WH	BE	BF	KK	Ø CD	EW	Ø D1	Ø D2	Ø D3	NB	Ø B	VD	G	PL	EE	L	L0	L1	L2	L3	L4	XC ^{±1}	SW	C	CH	K
32	22	34	M30x1.5	26	M10x1.25	10	16	12	36	38	36	30	2	15.5	8	G1/8	13	69.5	103.5	151.5	137.5	181.5	117.5	17	6	10	6
40	24	39	M38x1.5	30	M12x1.25	12	18	16	45	46	43	38	3	21	10	G1/4	15	84.6	123.6	177.6	162.6	210.6	139.6	19	7	13	6
50	32	44	M45x1.5	33	M16x1.5	16	21	20	55	57	54	45	3	19.6	9.8	G1/4	16	86.2	130.2	195.2	174.2	238.2	147.2	24	8	17	8
63	32	45	M45x1.5	33	M16x1.5	16	21	20	68	70	67	45	3	24	11.5	G3/8	16	94.2	139.2	204.2	184.2	248.2	156.2	24	8	17	8

VERSION 1A1... (SINGLE-ACTING)

Stroke	L0				L1				L2				XC			
	Ø 32	Ø 40	Ø 50	Ø 63	Ø 32	Ø 40	Ø 50	Ø 63	Ø 32	Ø 40	Ø 50	Ø 63	Ø 32	Ø 40	Ø 50	Ø 63
0 - 50	69.5	84.6	86.2	94.2	103.5	123.6	130.2	139.2	151.5	177.6	195.2	204.2	117.5	139.6	147.2	156.2
51 - 100	98.5	113.6	121.7	130.7	132.5	156.1	165.7	175.7	180.5	210.1	230.7	240.7	146.5	172.1	182.7	192.7
101 - 150	127.5	146.1	157.2	167.2	161.5	188.6	201.2	212.2	209.5	242.6	266.2	277.2	175.5	204.6	218.2	229.2
151 - 200	156.5	178.6	192.7	203.7	190.5	221.1	236.7	248.7	238.5	275.1	301.7	313.7	204.5	237.1	253.7	265.7
201 - 250	185.5	211.1	228.2	240.2	219.5	253.6	272.2	285.2	267.5	307.6	337.2	350.2	233.5	269.6	289.2	302.2

For all the other values, see previous table.

Please contact our sales offices for further information and quotation.

KEY TO CODES

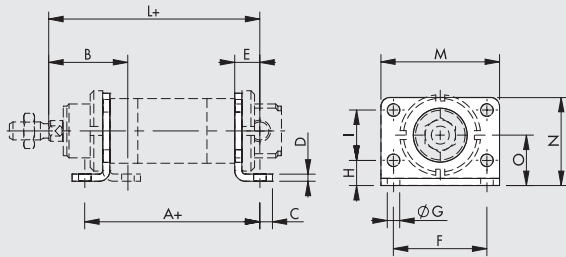
CYL	1 A 0 TYPE	0	3 2 BORE	0 0 5 0 STROKE	A MATERIAL	P GASKETS
	1A9 Cushioned double-acting	0 Standard	32	For the maximum suppliable strokes, look at the technical data	A C45 chrome piston rod, aluminium piston	P Polyurethane
	1A0 Double-acting	▲ G No stick-slip	40		Z Stainless steel piston rod and nut aluminium piston	N NBR
	1A1 Single-acting	S Non-magnetic	50			● V FKM/FPM
	1A2 Magnetic double-acting		63			● B Low temperature
	1A3 Magnetic double-acting cushioned					
	1A4 Magnetic double-acting through-rod					
	1A5 Magnetic double-acting cushioned, through-rod					

- ▲ For speeds lower than 0.2m/s, to prevent surging. Use no-lubricated air only
- Only available for non-magnetic versions (S)

ACCESSORIES FOR ROUND CYLINDER SERIES SHORT RNDC: FIXINGS

FOOT MODEL AC

+ = ADD STROKE

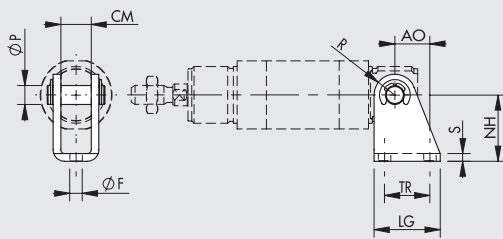


Code	Ø	A	B	C	D	E	F	ØG	H	I	L	M	N	O	Weight [g]
W0950320002	32	97.5	44	7	4	14	52	7	14	28	117.5	66	49	28	104
W0950400002	40	124.6	49	10	5	20	60	9	18	30	138.6	80	58	33	190
W0950500002	50	126.2	58	10	6	20	70	9	20	40	150.2	90	70	40	296
W0950500002	63*	134.2	59	10	6	20	70	9	20	40	159.2	90	70	40	296

* On Ø 63, it can be used only if mounted outwards
Note: Individually packed

COUNTER-HINGE MODEL BCS

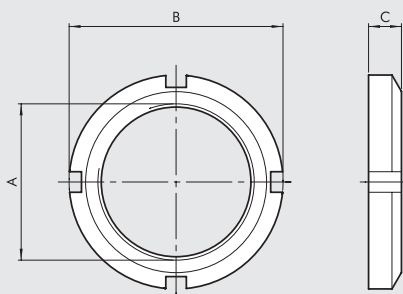
+ = ADD STROKE



Code	Ø	AO	TR _{js13}	ØF _{H13}	ØP _{F7}	CM	R	S	NH	LG	Weight [g]
W0950320022	32	18.5	24	6.6	10	16.1	11	4	35 ^{+0.40} _{-0.20}	35	105
W0950400022	40	24.5	30	9	12	18.1	13	5	40 ^{+0.40} _{-0.20}	45	185
W0950500022	50 - 63	28	34	9	16	21.1	14	6	45 ^{+0.50} _{-0.20}	50	290

Note: Supplied complete with pin and 2 snap rings

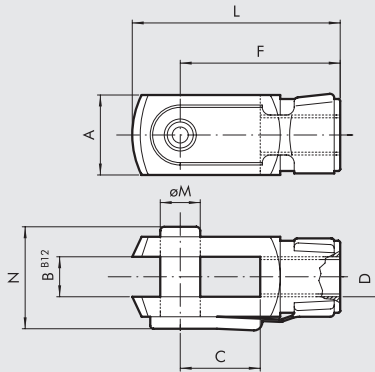
HEAD LOCK RING MODEL G



Code	Ø	A	B	C	Weight [g]
W0950320010	32	M30x1.5	45	7	46
W0950400010	40	M38x1.5	50	8	56
W0950500010	50 - 63	M45x1.5	58	9	124

Note: Individually packed

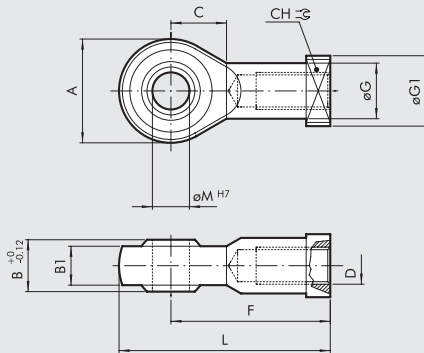
FORK MODEL GK-M



Code	Ø	øM	C	B	A	L	F	D	N	Weight [g]
W0950322020	32	10	20	10	20	52	40	M10x1.25	26	92
W0950402020	40	12	24	12	24	62	48	M12x1.25	32	148
W0950502020	50 - 63	16	32	16	32	83	64	M16x1.5	40	340

Note: Individually packed

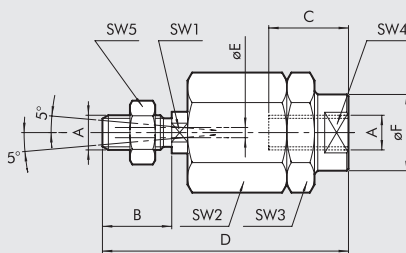
SPHERICAL JOINT MODEL GA-M



Code	Ø	øM	C	B1	B	A	L	F	D	øG	CH	Weight [g]
W0950322025	32	10	15	10.5	14	28	57	43	M10x1.25	15	17	78
W0950402025	40	12	17	12	16	32	66	50	M12x1.25	17.5	19	116
W0950502025	50 - 63	16	22	15	21	42	85	64	M16x1.5	22	22	226

Note: Individually packed

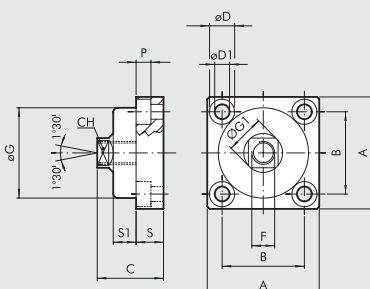
ARTICULATED JOINT MODEL GA-K



Code	Ø	A	B	C	D	øE	øF	SW1	SW2	SW3	SW4	SW5	Weight [g]
W0950322030	32	M10x1.25	20	20	71	4	22	12	30	30	19	17	216
W0950402030	40	M12x1.25	24	20	75	4	22	12	30	30	19	19	220
W0950502030	50 - 63	M16x1.5	32	32	103	4	32	20	41	41	30	24	620

Note: Individually packed

FLEXIBLE COLLAR - MODEL GA



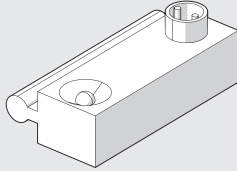
Code	Ø	A	B	C	CH	øD	øD1	F	øG	øG1	P	S	S1	Weight [g]
W0950326021	32	49	36	30	13	11	6.5	M10x1.25	39.5	17	6.5	12	10	172
W0950406021	40	59	42	36	15	14	8.5	M12x1.25	44	19	8.5	15	13.5	286
W0950506021	50 - 63	79	58	44	22	17	10.5	M16x1.5	59	26	10.5	20	15	628

Note: Individually packed

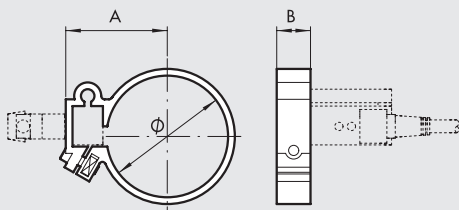
ACCESSORIES FOR ROUND CYLINDER SERIES SHORT RNDC: MAGNETIC SENSORS

SENSOR SERIES DSM - Ø 32-50

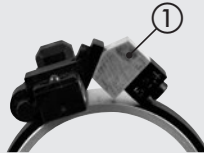
For codes and technical data, see **chapter A6**.



SENSOR BRACKET - Ø 32-50



Code	Bore	Model	Ø	A	B
W0950000132	32	Bracket DXF 36-32	36	29.5	10
W0950000140	40	Bracket DXF 45-40	45	34.5	10
W0950000150	50	Bracket DXF 52-50	55	38.5	10



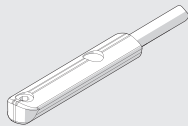
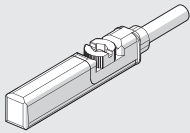
FOR MOUNTING ON THE CYLINDER Ø 50 INSERT THE ALUMINIUM SPACER ① YOU FIND IN THE PACKAGE

RETRACTABLE SENSOR - Ø 63

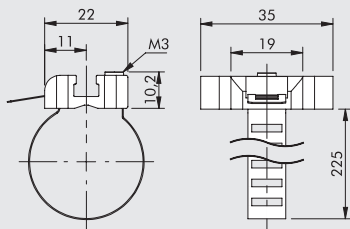
For codes and technical data, see **chapter A6**.

SENSOR, SQUARE TYPE
Latest generation,
secure fixing

SENSOR, OVAL TYPE
Traditional



UNIVERSAL SENSOR BRACKET - Ø 63



Code	Bore	Model
W0950001103	63	Sensor bracket 8 to 63

Note: Individually packed

MATERIAL

Bracket: stainless steel
Sensor holder: zamak

NOTES



NOTES

A large rectangular area with horizontal grey lines, intended for handwritten notes.

CUSTOM PRODUCTS