

LIGHT-WEIGHT MANIPULATORS TECNO SERIES

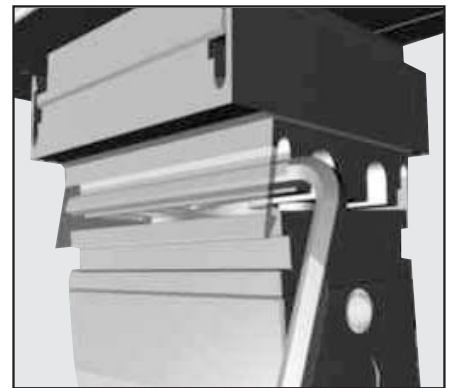
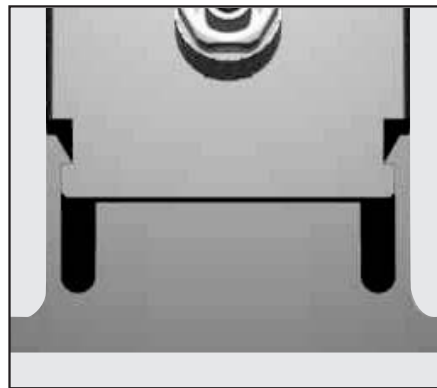
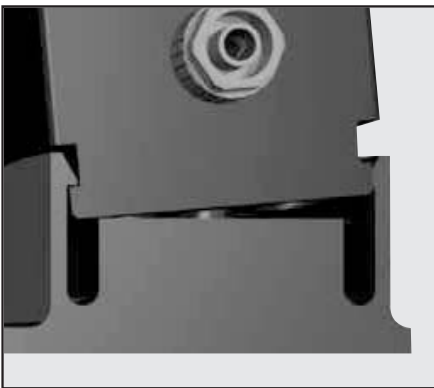
The TECNO system is a real novelty in the field of manipulation technology. TECNO is comprised of pneumatic clamping modules, a linear actuator and a rotary actuator. It is made almost entirely of technopolymer which reduces the load for the manipulation unit and allows higher speeds thanks to low moments of inertia.

All the modules can be joined together as required, using the connecting elements with push-in fitting. To disassemble, merely insert the key provided and turn it 90° - jammed or damaged screws are now a thing of the past and, if necessary, all the units can be secured by means of threaded bushes in the interfaces.

All the modules can be controlled by retracting magnetic sensors.



COUPLING METHODS

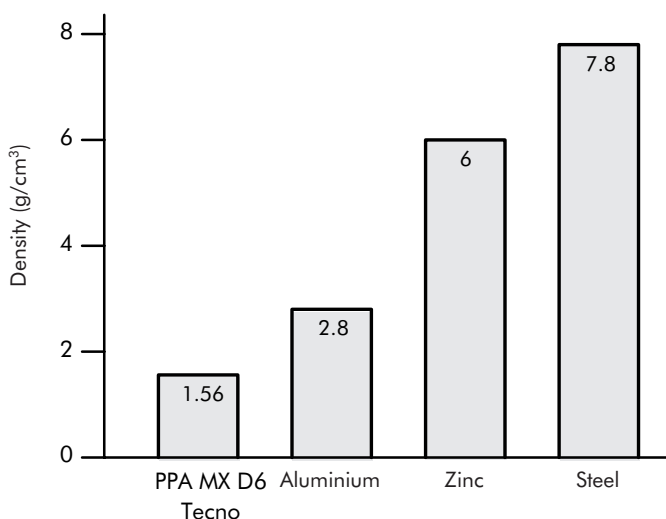


Mounting the modules is quick and easy.

The sturdy coupling teeth ensure a safe, durable hold.

Release is quick and easy using the key provided.

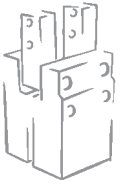
DIAGRAM OF DENSITIES USED



This block diagram compares the densities of the main materials used in the construction of pneumatic components.

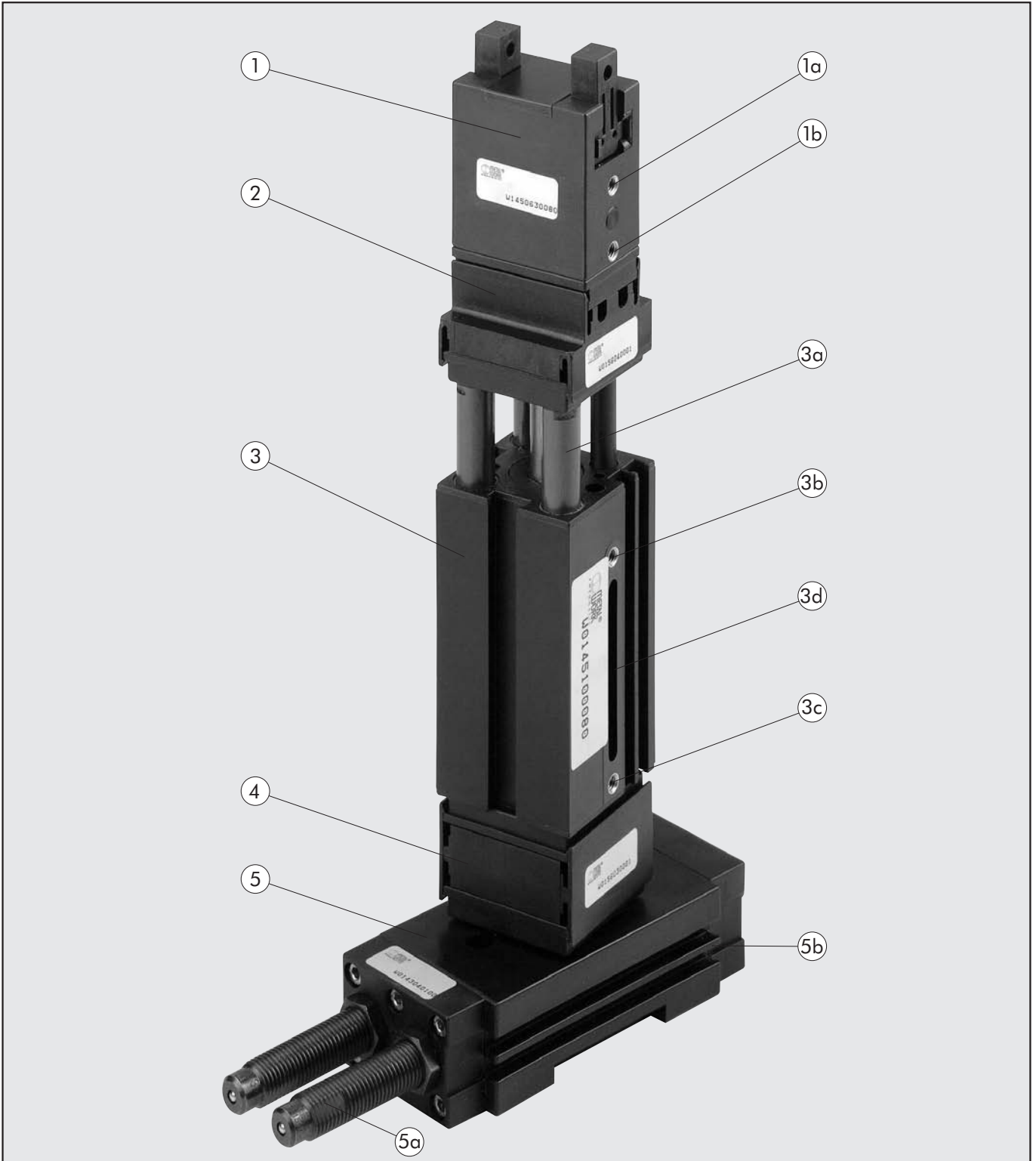
Tecno components are made of PPA MXD6, a material which guarantees:

- high density
- excellent rigidity
- smooth sliding
- no-deformation in the presence of moisture
- easy recycling



THE TECNO SOLUTION

1



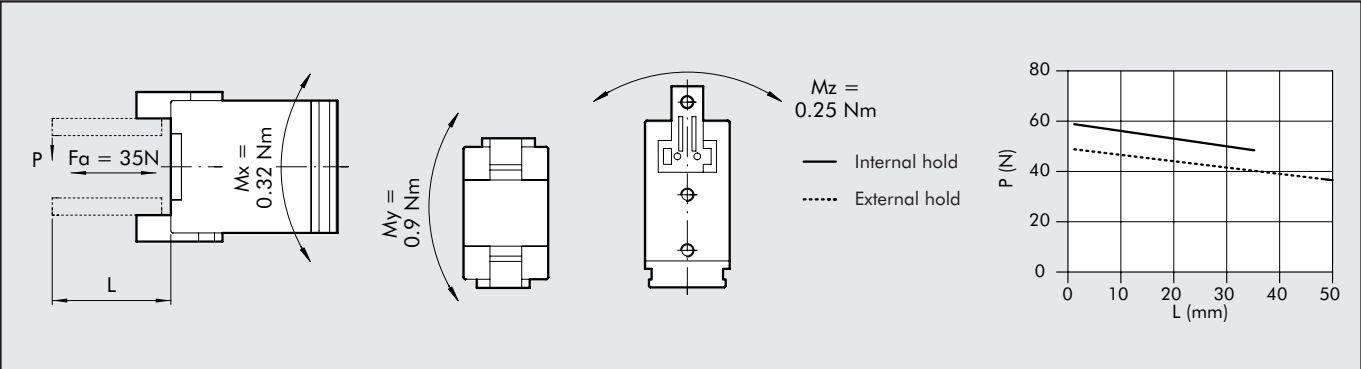
- ① Gripper with two parallel jaws series TECNO code W0710010001
- ①a M5 port: jaw closing
- ①b M5 port: jaw opening
- ② Push-in Gripper-Linear Unit / Gripper-Rotary Actuator code W0710040002
- ③ Linear actuator with TECNO antirotation system code W0710030001
- ③a Guide column with bush system
- ③b M5 port: piston rod in
- ③c M5 port: piston rod out
- ③d Slot for retracting sensor
- ④ Push-in connector for TECNO actuators code W0710040001
- ⑤ Rotary actuator series TECNO code W0710020001
- ⑤a Decelerators for retracting sensor
- ⑤b Slot for retracting sensor

GRIPPER WITH TWO PARALLEL JAWS SERIES TECNO P5

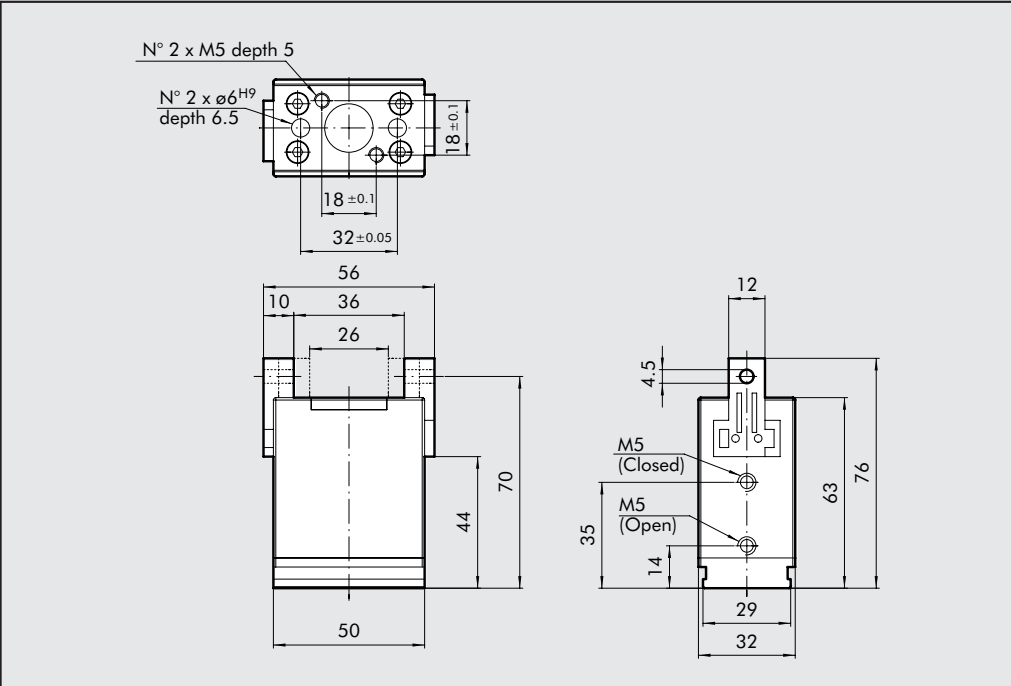
TECHNICAL FEATURES		
Pressure range	bar	2 to 6.5
Temperature range	°C	5 to 60
Fluid		20µm dried or lubricated filtered air
Life		over 1.5 million cycles
Jaw stroke	mm	5
Clamping force at 6 bar with L=25mm	N	100
Applicable weight (recommended)	Kg	0.2
Air consumption per cycle	cm ³	5.2
Opening time	sec	0.025
Closing time	sec	0.03
Weight of grippers	Kg	0.15
Moment of inertia Y-Y	Kg cm	0.51
Repeatability	mm	0.05
Maximum length of clamping finger	mm	50



FORCE AND MOMENT ADMITTED

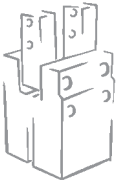


DIMENSIONS OF GRIPPER WITH TWO PARALLEL JAWS SERIES P5



Code	Description
W0710010001	GRIPPER PARALLEL TECNO P5

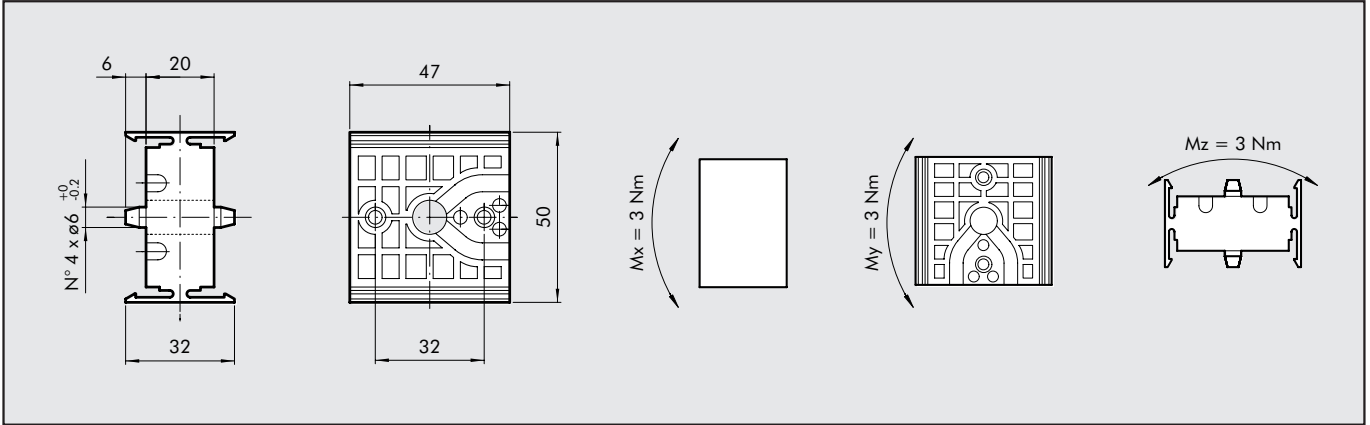
FOR SENSOR SEE PAGE 1.1/22



TECNO ACCESSORIES

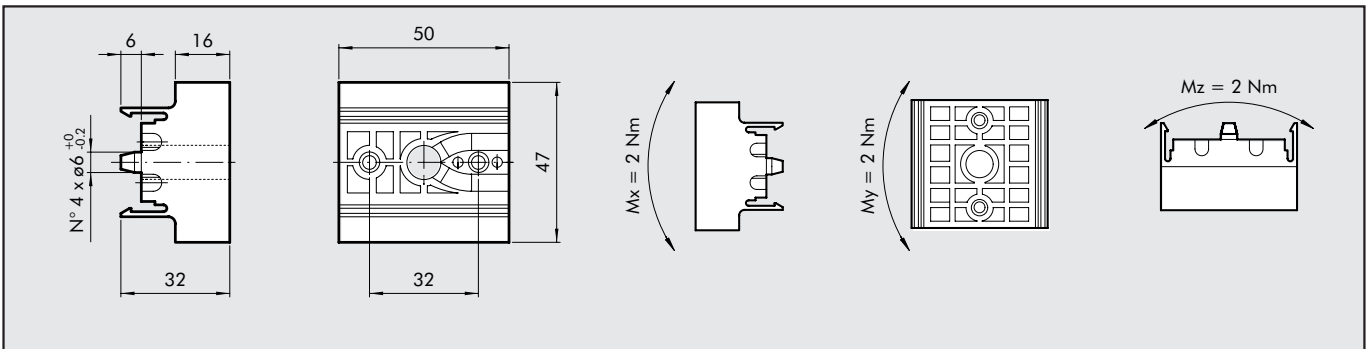
ROTARY CYLINDER/TECNO GUIDE CONNECTING ELEMENT

1



Code	Description
W0710040001	CONNECTING ELEMENT R5/S5

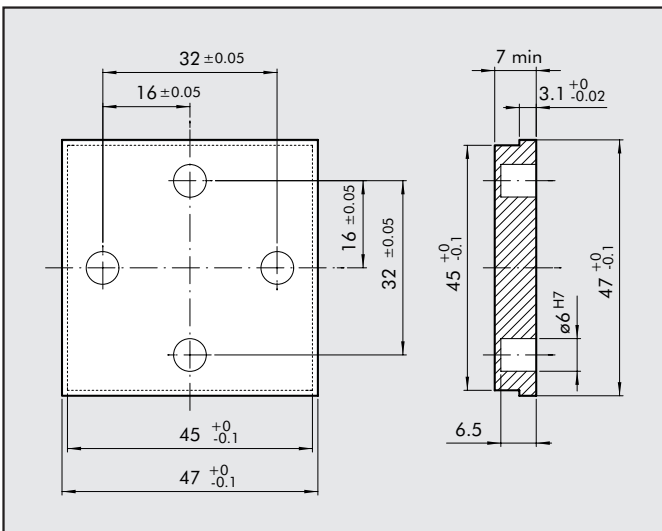
GRIPPER/GUIDE OR GRIPPER/ROTARY CYLINDER CONNECTION ELEMENT



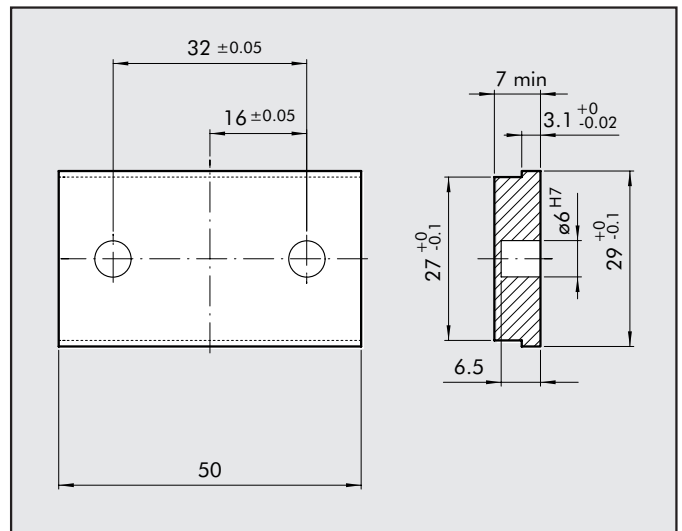
Code	Description
W0710040002	CONNECTING ELEMENT

SUGGESTED ADAPTOR DESIGN

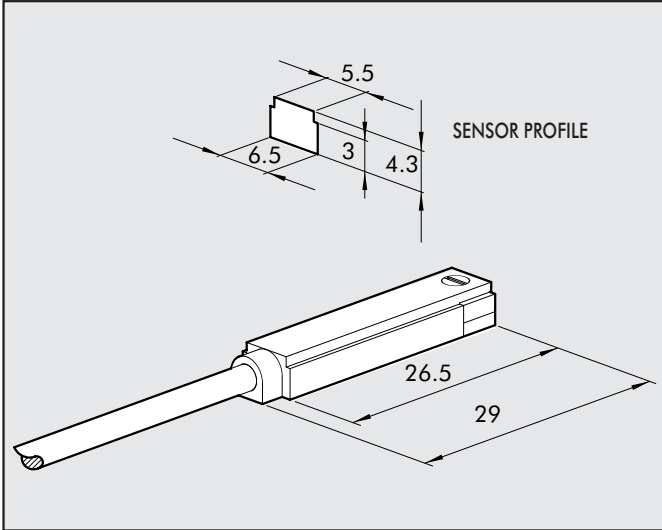
INTERFACE PLATE FOR ROTARY CYLINDER OR TECNO GUIDE



INTERFACE PLATE FOR TECNO GRIPPER SERIES P5

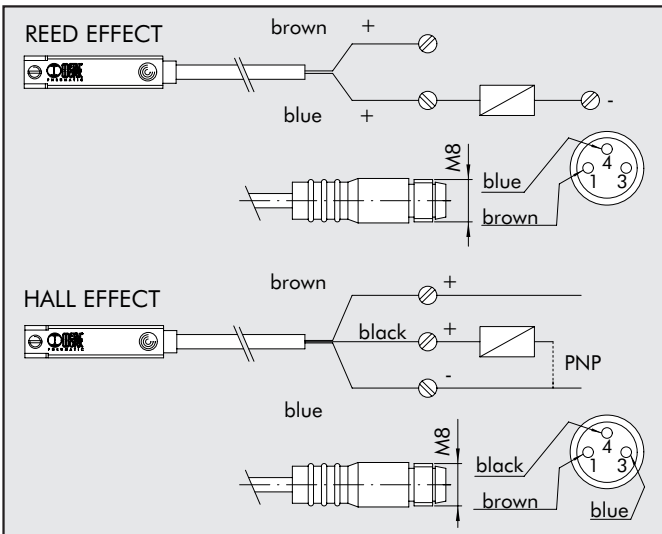


RETRACTING SENSOR



Code	Description
W0950025390	Hall sensor DSL, 3 wires, NO 2.5 m
W0950029394	Hall sensor DSL, 3 wires, NO 300 mm M8
W0950022180	Hall sensor DSL, 2 wires, NO 2.5 m
W0950028184	Hall sensor DSL, 2 wires, NO 300 mm M8

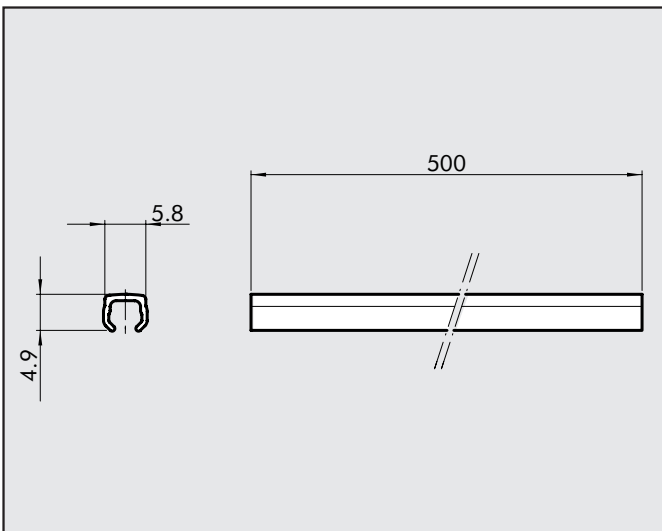
WIRING DIAGRAM



TECHNICAL FEATURES

	Reed	Hall effect
Type of contact	N.O.	N.O.
Switch	-	PNP
DC voltage range	V 3÷30	6÷30
AC voltage range	V 3÷30	-
Absorption	A 0.1	0.2
DC power	W 6	4
AC power	VA 6	-
Temperature range	°C -20°C to +85°C	
Activation time	s 0.5µs	0.8µs
De-activation time	s 0.1µs	0.3µs
Life	imp 10 million	10 ⁹ million
Contact resistance	Ω 0.1	-
Degree of protection	IP 65	
Voltage drop	V 3	1
Number of wires	2	3

STRIP



Code	Description
W0950000160	SLOT STRIP 500 mm