

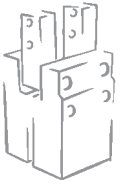
# GRIPPERS WITH 3 PARALLEL JAWS – SERIES P11

Double-acting grippers with three self-centring jaws, internal and external clamping. The body contains slots for mounting retracting magnetic sensors.

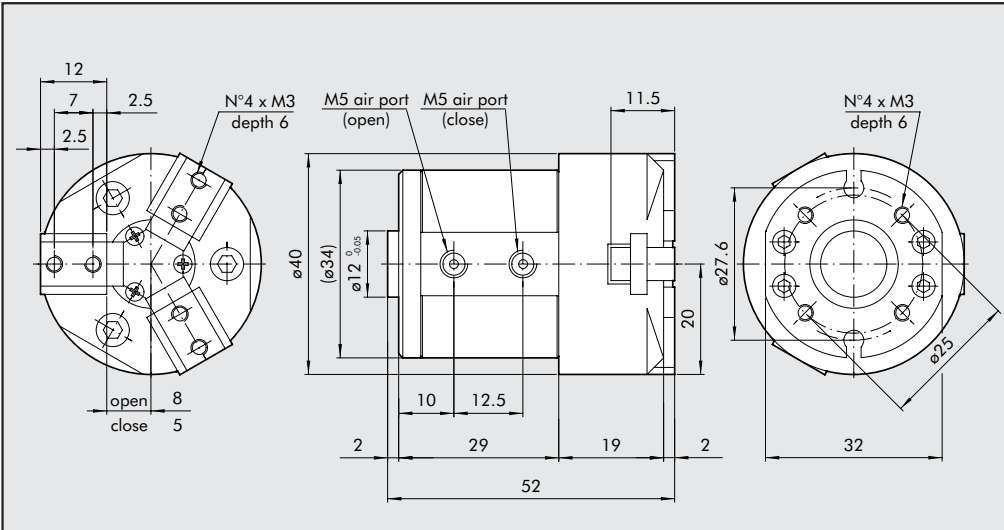


TECHNICAL FEATURES	P11 - 16	P11 - 20	P11 - 25	P11 - 40	P11 - 60	P11 - 80	
Min./max. operating pressure	bar						
Temperature range	1.5÷7						
Fluid	°C						
Bore	20µm dried and lubricated filtered air. Lubrication, if used, must be continuous.						
Single jaw stroke	mm	16	20	25	40	60	80
Closing force at 6 bar	N	3	4	5	8	12.5	15
Opening force at 6 bar	N	58	90	150	390	880	1500
Weight	kg	65	108	170	450	1000	1700
Maximum operating frequency	cycles/s	0.12	0.21	0.3	1.2	2.7	4.5
		1.5	1.5	1.5	1.2	1.2	1.2

## NOTES



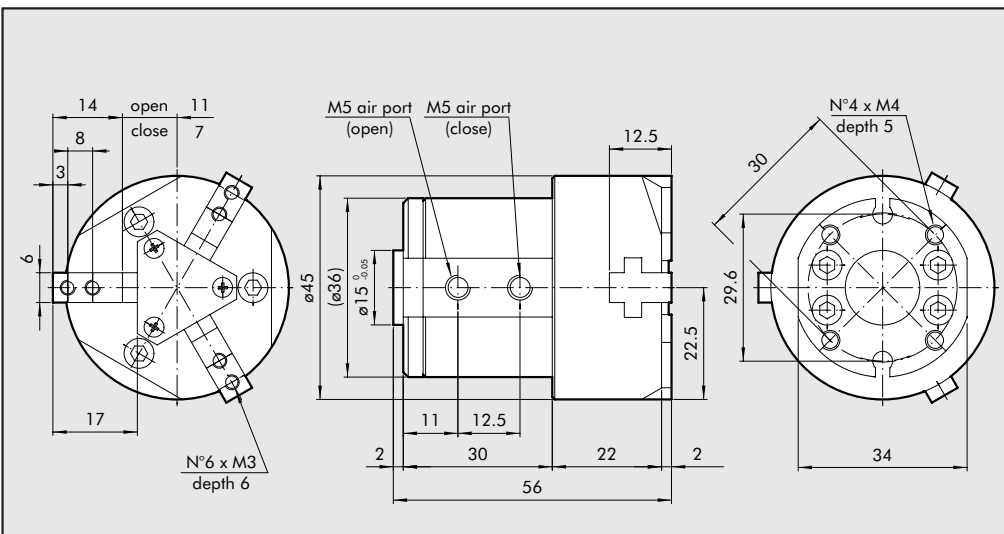
**DIMENSIONS OF GRIPPER P11-16**



**ORDERING CODES**

Code	Description
W1570160300	GRIPPERS WITH 3 PARALLEL JAWS P11-16

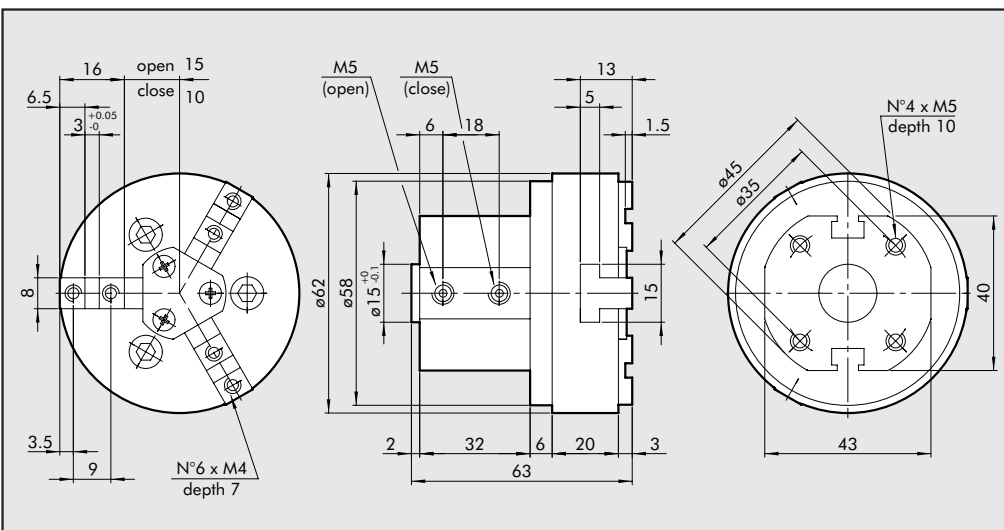
**DIMENSIONS OF GRIPPER P11-20**



**ORDERING CODES**

Code	Description
W1570200300	GRIPPERS WITH 3 PARALLEL JAWS P11-20

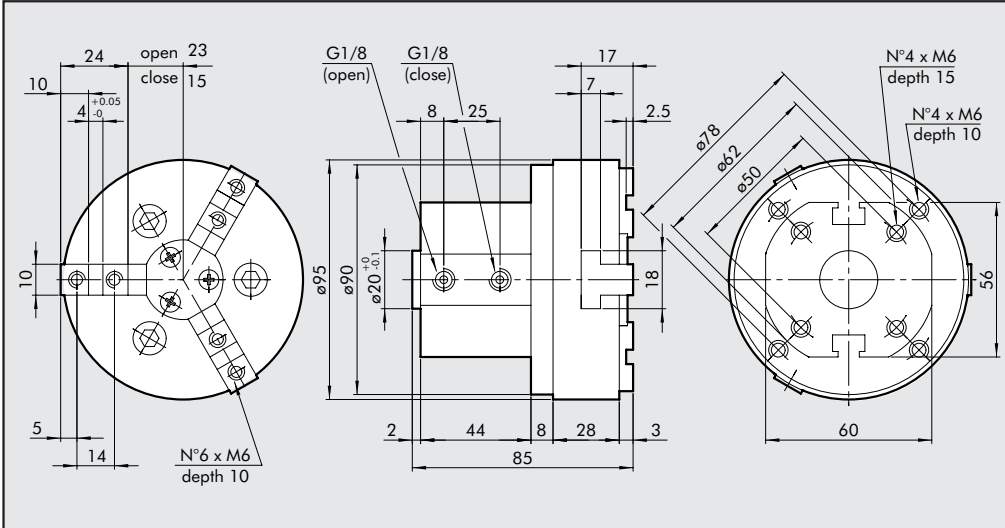
**DIMENSIONS OF GRIPPER P11-25**



**ORDERING CODES**

Code	Description
W1570250300	GRIPPERS WITH 3 PARALLEL JAWS P11-25

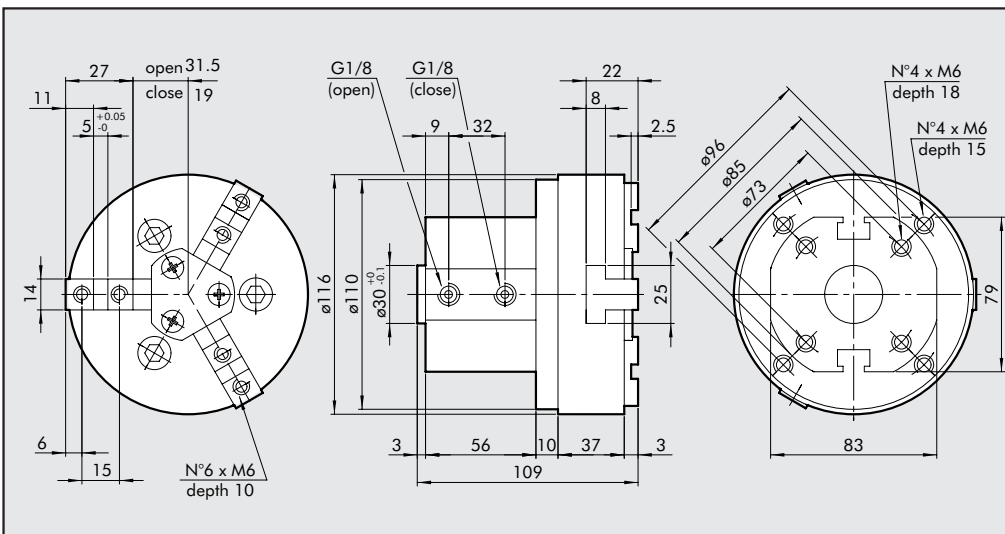
### DIMENSIONS OF GRIPPER P11-40



### ORDERING CODES

Code	Description
W1570400300	GRIPPERS WITH 3 PARALLEL JAWS P11-40

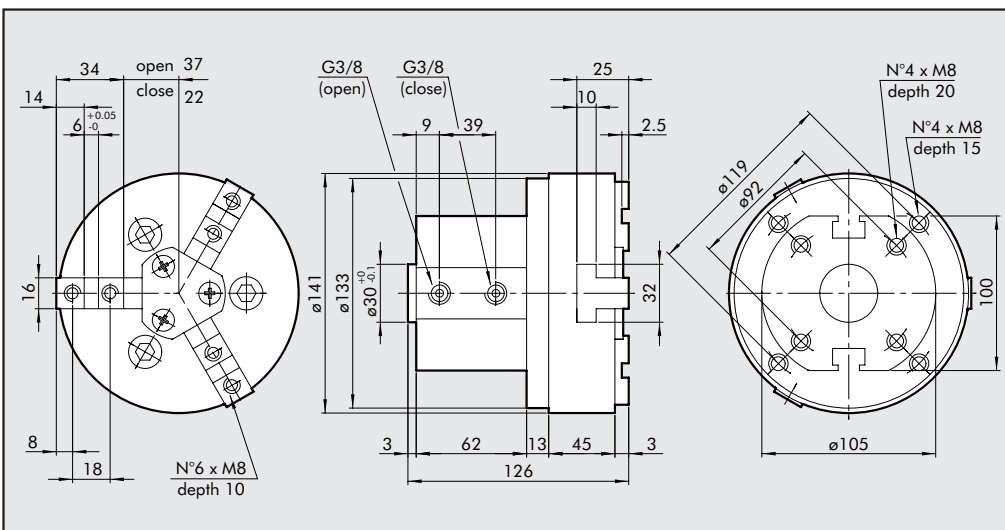
### DIMENSIONS OF GRIPPER P11-60



### ORDERING CODES

Code	Description
W1570600300	GRIPPERS WITH 3 PARALLEL JAWS P11-60

### DIMENSIONS OF GRIPPER P11-80



### ORDERING CODES

Code	Description
W1570800300	GRIPPERS WITH 3 PARALLEL JAWS P11-80

